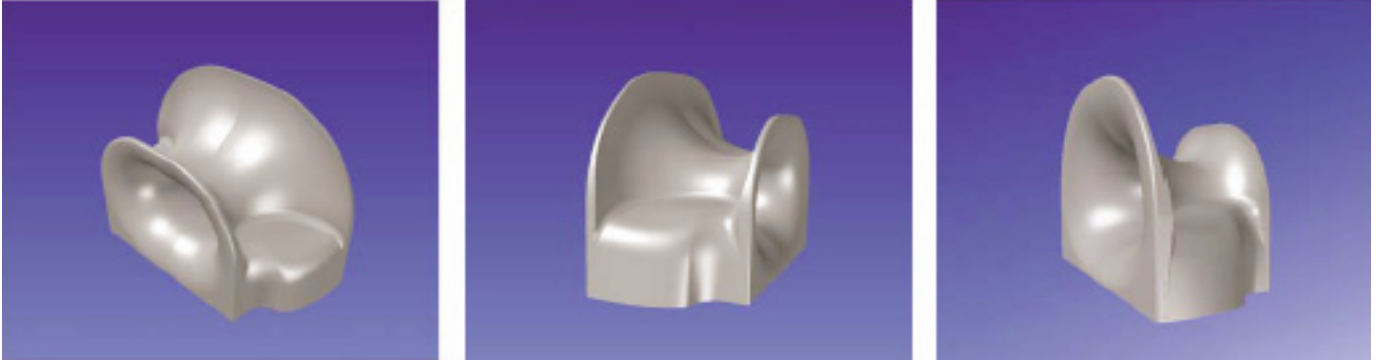


# Products from I BENNMO AB SWEDEN

## Escort Towing Lead COMBI LEAD 400

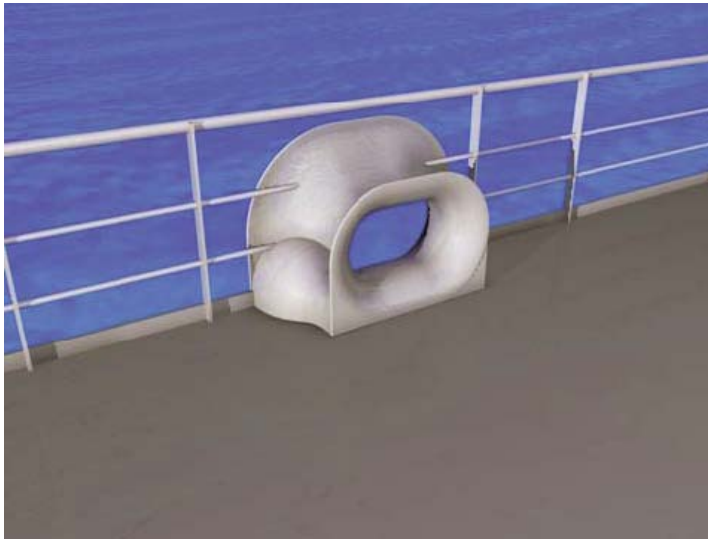
**Combi Lead 400** is specially designed for escort towing, emergency towing, harbour towing and for mooring with maximum function without any compromises.



**Combi Lead 400** is designed for escorting, pullback and other high load operations systems according to OCIMF recommendations.

**Combi Lead 400** is a fairlead for emergency towing in accordance with IMO emergency towing requirements and complies with OCIMF recommendations for ship's fittings for use with tugs.

**Combi Lead 400** has a unique design which has made it possible to reduce the weight from 650 kg to 425 kg and still has MBL 400 tonnes and SWL 200 tonnes.



### Product information:

Material: S5 1306 or equal

Dimension: 1030X450X700mm

SWL: 400T

MBL: 200T

Weight: 425 Kg

Certificate No.: S-4248



**Type Approved Product MBL 400 tonnes and SWL 200 tonnes.**

# Hoeybyemarine.com